

## Exhibitions:

Each Season brings fresh collections of pictures so there's always something new on show...

### Spring Exhibition

April to May

### Summer Exhibition

June to July

### Autumn Open Studio

September to October

### Winter Christmas Exhibition

November to January

Our website: [www.walkerngallery.com](http://www.walkerngallery.com) shows details of works available and the artists whose work is shown at the gallery.

## Opening times:

**Thursday to Sunday** - 10am to 5pm  
or at other times by arrangement;

Contact **Stephen Lowe** on **01438 860363**

As this is a working studio it is advisable to confirm whether gallery is open or not.

(For private view invitations please email or register on our website).

## FREE ADMISSION

Purchases can be made via our website using PayPal or any credit or debit card.



## How to find us:



### Directions from Stevenage (A1)

Follow B1037 to Cottered; driving through Walkern High Street, Walkern Gallery is on the Left, opposite the White Lion Pub, where coffee and a good lunch are also available.

### Directions from Buntingford (A10)

Take the A507 towards Baldock, at Cottered turn left towards Cromer; approaching Walkern the Gallery is on the Right, just after passing a dovecote and before the White Lion Pub.

## Walkern Gallery

56 High Street, Walkern, Herts. SG2 7PG

**Tel:** 01438 860363

[www.walkerngallery.com](http://www.walkerngallery.com)

# Walkern Gallery

## Exhibition Guide

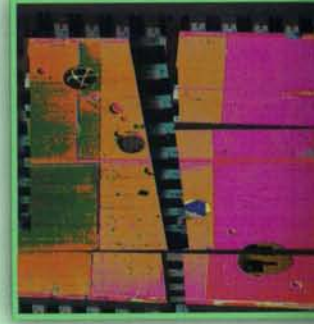
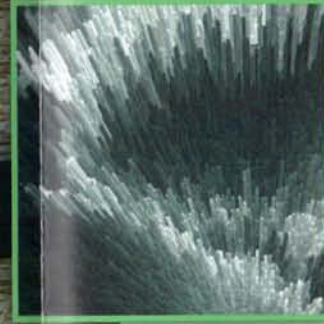




Come visit our gallery to see a wide choice of original contemporary & traditional artwork.



More creativity than you can imagine, with plenty of styles to satisfy any room!



We also show glassware, ceramics, wood turning & garden sculpture.

